



JODHPUR VIDYUT VITRAN NIGAM LTD.

(A Govt. of Rajasthan undertaking)

Corporate Identity Number (CIN) –U40109RJ2000SGC016483

Regd. Office: New Power House, Jodhpur- 342003

Office of the Superintending Engineer(CSS)

Phone No: 0291-2742336, Fax No: 0291-2745259

E-mail: seipdsjdvvn@gmail.com, Web site: www.jdvvn.com

No. JdVVNL/SE (CSS)/JU/XEN-IPDS/TN-TW-455 / GIS S/S / D. 1179 Dated 15.7.19

**All Prospective Bidders
GIS Tender / TN TW-455.**

CLARIFICATION

Subject :- Regarding clarification over uploaded Standard Bid Documents, under TN TW-455, scheduled to be opened on dated 24.07.2019.

On the above cited subject, it is informed that some prospective bidder(s) has raised the queries on the Standard Bid Documents, uploaded under TN TW-455 and scheduled to be opened on dated 24.07.2019. The clarifications are as under:-

A). The Single Line Diagram, having details about CT, PT, Cable Termination, protection required etc., is as per attached file.

B). The Auxiliary Power Supply, shall be 110 V DC, as mentioned in the bidding document.

C). The type Test certificate shall not be older than 10 years on the date of bid opening, as mentioned in the bidding document.

All other terms & conditions, mentioned in the uploaded Standard Bid Documents, remains, unaltered.

This is issued without prejudice to the terms & conditions, mentioned in the uploaded Standard Bid Documents.

Encl:- Single Line Diagram.

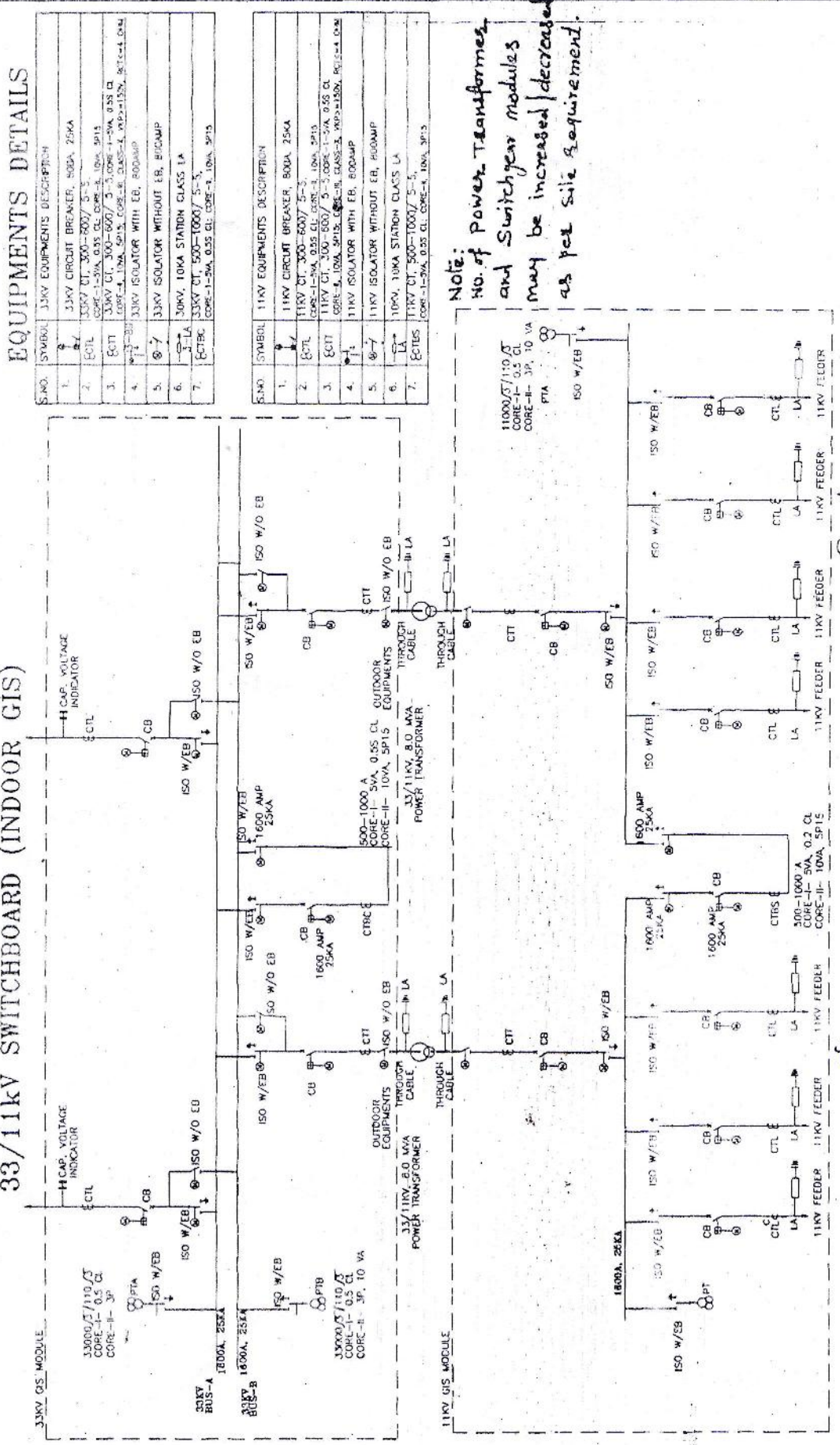
(DR. SANJAY VAJPAI)
SUPERINTENDING ENGINEER (CSS)
JODHPUR DISCOM, JODHPUR

(H)

JDNWNL / TN TW - 455

Single Line Diagram (SLD)

33/11kV SWITCHBOARD (INDOOR GIS)



EQUIPMENTS DETAILS

S.NO	SYMBOL	11KV EQUIPMENTS DESCRIPTION
1.	⊕	11KV CIRCUIT BREAKER, 80KA, 25KA
2.	⊕	11KV CT, 300-600/5-5
3.	⊕	11KV CT, 300-600/5-5, CORE-1, 10VA, 3P15
4.	⊕	11KV CT, 300-600/5-5, CORE-1, 10VA, 3P15
5.	⊕	11KV ISOLATOR WITH EB, 800AMP
6.	⊕	11KV ISOLATOR WITHOUT EB, 800AMP
7.	⊕	11KV CT, 500-1000/5-5

S.NO	SYMBOL	11KV EQUIPMENTS DESCRIPTION
1.	⊕	11KV CIRCUIT BREAKER, 80KA, 25KA
2.	⊕	11KV CT, 300-600/5-5
3.	⊕	11KV CT, 300-600/5-5, CORE-1, 10VA, 3P15
4.	⊕	11KV ISOLATOR WITH EB, 800AMP
5.	⊕	11KV ISOLATOR WITHOUT EB, 800AMP
6.	⊕	10KA, 10KA STATION CLASS LA
7.	⊕	11KV CT, 500-1000/5-5

Note:
No. of Power Transformers
and Switchgear modules
may be increased/decrease
as per site requirement.

JEN(IPDS)

XEN(IPDS)

JEN(IPDS)