



JODHPUR VIDYUT VITRAN NIGAM LTD.

Corporate Identity Number (CIN) –U40109RJ2000SGC016483

Regd. Office: New Power House, Jodhpur- 342003

Phone No: 0291-2748970, Fax No: 0291-5106121

E-mail: secyadm@yahoo.co.in Web site: www.jdvvn.com

No: - Jd.V.V.N.L. /Secy(Admn) /JU/ SE (T.W.)-RGGVY / OO-5A-1 / D 3354 Dated:- 03.02.2015

ORDER

The Co-ordination Committee in its 172nd meeting held on 14.08.2014 has accorded its approval for creation of RGGVY Cell at Corporate Level (Discom Headquarter) and District / Circle Level with deployment of existing staff with reference to guide-lines issued by the REC & Ministry of Power , Govt of India under RGGVY XII plan.

In pursuance to the aforesaid decision , the DEDICATED CELL (Project Management System) for implementation of RGGVY XII plan is hereby created as under :

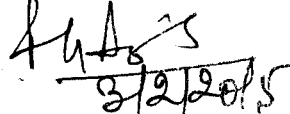
- (i) PMS at DISCOM headquarter as per enclosed Annexure-A
- (ii) PMS at DISTRICT / CIRCLE as per enclosed Annexure-B

The Chief Engineer (RGGVY) shall be the in-charge of aforesaid PMS. He will arrange issuance of order and upload at Nigam's website for individual DISTRICT / CIRCLE wise PMS cell with name & phone number of officials as per set-up prescribed in Annexure-B. He will also arrange mandatory office infrastructure as prescribed in REC guidelines and engagement of contract staff.

The SE(RGGVY) shall be the Project Co-ordinator and concerned SE(O&M) shall act as the nodal officer for respective District / Circle. Concerned Executive Engineer(RGGVY) shall be the Engineer in-charge for respective District / Circle.

This order is issued in partial modification of order No. ADMN-176 dated 10.11.2014.

By order


3/2/2015

(R.K.Singh)

Secretary(Admn)

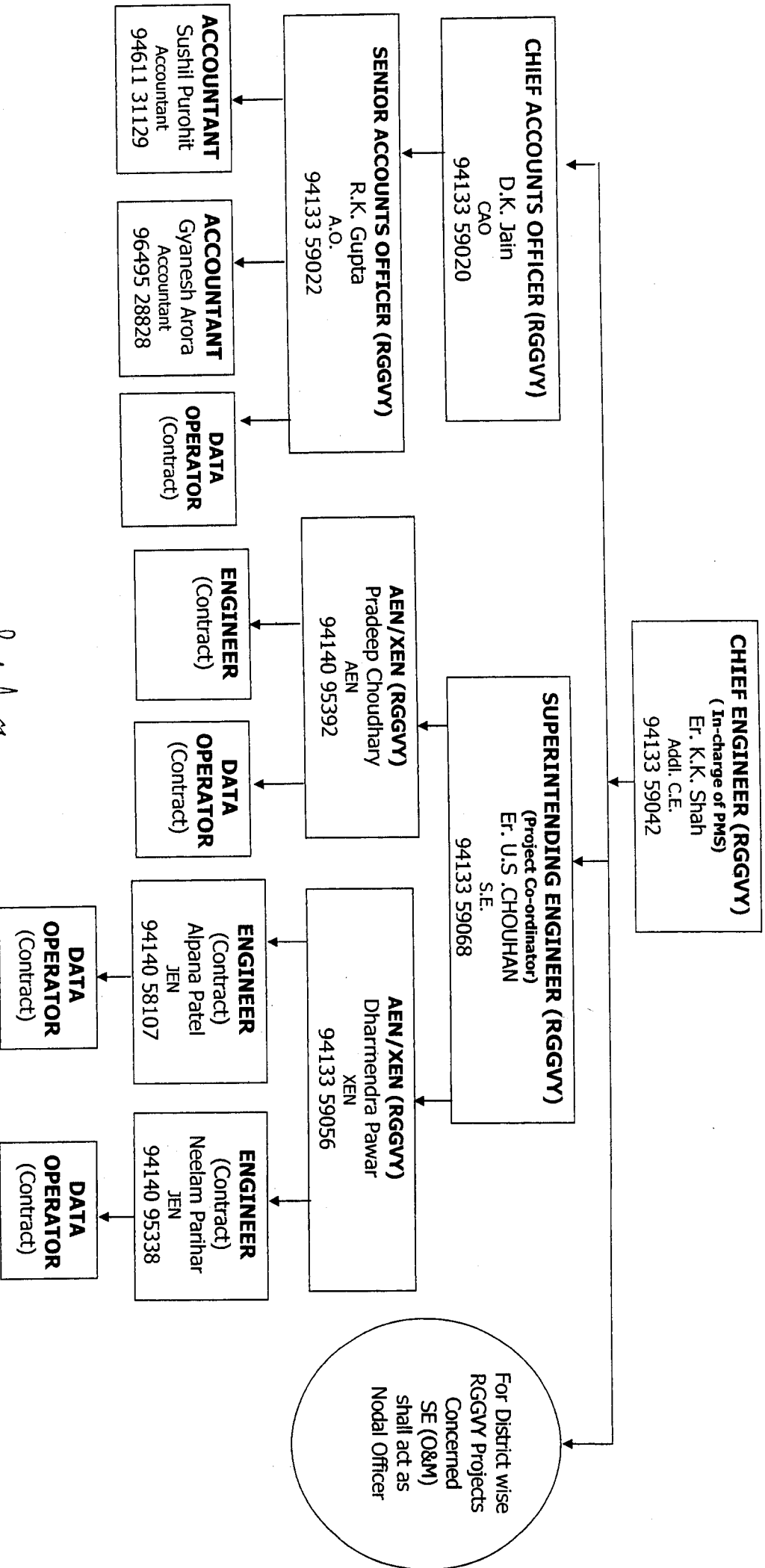
Jodhpur Discom, Jodhpur

JODHPUR VIDYUT VITARAN NIGAM LIMITED

Annexure-A

RGVY 12TH PLAN

ORGANISATIONAL CHART OF PROJECT MANAGEMENT SYSTEM (PMS) AT DISCOM HEAD QUARTER



SECRETARY (ADMN.)
JODHPUR DISCOM, JODHPUR

[Handwritten Signature]



JODHPUR VIDYUT VITRAN NIGAM LTD.

Corporate Identity Number (CIN) –U40109RJ2000SGC016483

Regd. Office: New Power House, Jodhpur- 342003

OFFICE OF THE CHIEF ENGINEER (RGGVY)

Phone No: 0291-2742336, Fax No: 0291-2745259

Web site: www.jdvvn.com

No: - Jd.V.V.N.L. / CE-RGGVY /JU/ SE (T.W.)-RGGVY / D 3425 Dated:- 06.02.2015

ORDER

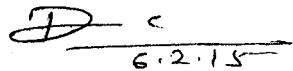
The Co-ordination Committee in its 172nd meeting held on 14.08.2014 has accorded its approval for creation of RGGVY Cell at Corporate Level (Discom Headquarter) and District / Circle Level with deployment of existing staff with reference to guide-lines issued by the REC & Ministry of Power , Govt of India under RGGVY XII plan. In pursuance to the aforesaid decision , the DEDICATED CELL for implementation of RGGVY XII plan was created vide order No.ADMN-176 dated 10.11.2014 , further PMS (Project Management System) at DISCOM headquarter was created vide order JdVVNL / Sec(Admn) / Ju / SE(TW-RGGVY) / OO-SA-1 / D-3354 / Dated 03.02.2015 .

PMS (Project Management System) at individual DISTRICT / CIRCLE (Jodhpur, Jaisalmer, Barmer, Pali, Sirohi, Jalore, Bikaner, Churu, Hanumangarh & Sriganganagar) is hereby created as per enclosed Annexure-B.

The SE(RGGVY) shall be the Project Co-ordinator and concerned SE(O&M) shall act as the nodal officer for respective District / Circle. All Executive Engineer(RGGVY) of respective District / Circle shall send proposal to SE(RGGVY) for arrangement of mandatory office infrastructure as prescribed in REC guidelines and engagement of contract staff.

Existing staff as mentioned in the chart shall execute RGGVY XII plan project work in addition to their own duties till arrangement / posting of separate / dedicated staff for the District PMS cell, if required.

Also to be uploaded at Nigam's web site for reference of all concerned.


6.2.15

(K.K.Shah)
Chief Engineer(RGGVY)
Jodhpur Discom, Jodhpur

JODHPUR VIDYUT VITARAN NIGAM LIMITED

Annexure - B

RGVY 12TH PLAN

**ORGANISATIONAL CHART OF PROJECT MANAGEMENT SYSTEM PMS AT DISTRICT/CIRCLE
JODHPUR**

For District wise RGVY Projects
Concerned SE (O&M)
shall act as Nodal Officer

EXECUTIVE ENGINEER (RGVY)
Engineer In-charge
ASHOK BORANA (XEN - TA to SE)
94133 59207

A.EN. (Quality Assurance-RGVY)
MANOJ DEORA
Feeder Manager
94133 59881

ASSISTANT ENGINEER (RGVY) - A
MAHESH DIDWANJA
Feeder Manager
94133 59273

ASSISTANT ENGINEER (RGVY) - B
Every AEN of concerned block shall act as AEN(RGVY) & will be responsible for implementation of RGVY project in their respective block.

Junior Engineer
Mrs REKHA CHOUDHARY
JEN
94140 20838

Junior Engineer
Miss RASHMI CHOUDHAN
JEN
94133 59275

Junior Engineer
VACANT
JEN

Junior Engineer
JEN of concerned block area

DATA OPERATOR
(Contract)

DATA OPERATOR
(Contract)

DATA OPERATOR
(Contract)

DATA OPERATOR
(Contract)

S.E. (RGVY)
[Signature]

C.E. (RGVY)
[Signature]

JODHPUR VIDYUT VITARAN NIGAM LIMITED

Annexure - B

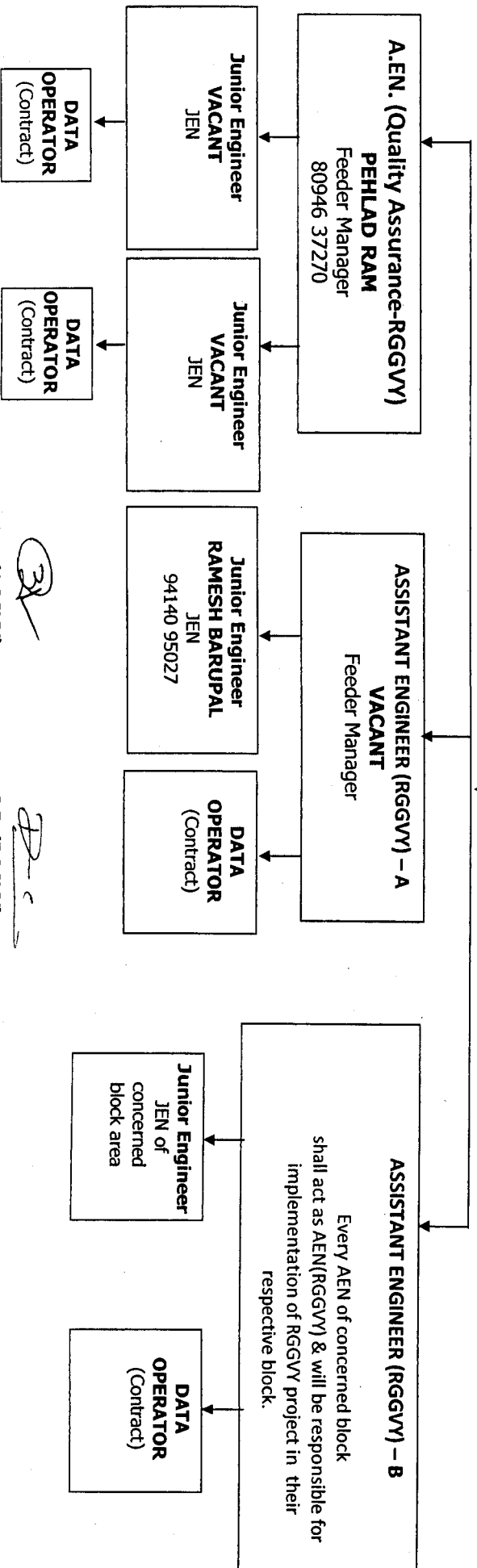
RGVY 12TH PLAN

ORGANISATIONAL CHART OF PROJECT MANAGEMENT SYSTEM PMS AT DISTRICT/CIRCLE

JAISALMER

For District wise RGVY Projects
Concerned SE (O&M)
shall act as Nodal Officer

EXECUTIVE ENGINEER (RGVY)
Engineer In-charge
N.K.JOSHI (XEN - TA to SE)
9414021327 / 9413359397



S.E. (RGVY)

C.E. (RGVY)

JODHPUR VIDYUT VITARAN NIGAM LIMITED

Annexure - B

**RGVY 12TH PLAN
ORGANISATIONAL CHART OF PROJECT MANAGEMENT SYSTEM PMS AT DISTRICT/CIRCLE
BARMER**

For District wise RGVY Projects
Concerned SE (O&M)
shall act as Nodal Officer

EXECUTIVE ENGINEER (RGVY)
Engineer In-charge
JAGDISH KATARIYA (XEN - TA to SE)
94145 59203

A.EN. (Quality Assurance-RGVY)
KAILASH KUMAR
Feeder Manager
94133 82771

Junior Engineer
Mrs TRAPTI SHARMA
JEN
94133 59452

DATA OPERATOR
(Contract)

Junior Engineer
VACANT
JEN

DATA OPERATOR
(Contract)

ASSISTANT ENGINEER (RGVY) - A
VACANT
Feeder Manager

Junior Engineer
Miss PURNIMA
JEN
95092 26670

DATA OPERATOR
(Contract)

ASSISTANT ENGINEER (RGVY) - B
Every AEN of concerned block shall act as AEN(RGVY) & will be responsible for implementation of RGVY project in their respective block.

Junior Engineer
JEN of concerned block area

DATA OPERATOR
(Contract)

S.E. (RGVY)

C.E. (RGVY)

JODHPUR VIDYUT VITARAN NIGAM LIMITED

Annexure - B

**RGVY 12TH PLAN
ORGANISATIONAL CHART OF PROJECT MANAGEMENT SYSTEM PMS AT DISTRICT/CIRCLE
PALI**

For District wise RGVY Projects
Concerned SE (O&M)
shall act as Nodal Officer
PALI

EXECUTIVE ENGINEER (RGVY)
Engineer In-charge
C.S.Meena (XEN-TA to SE)
9413359301

A.EN. (Quality Assurance-RGVY)
Dharmendra Prajapat
Feeder Manager
9414058575

Junior Engineer
Miss Deepthi
JEN
9414095846

DATA OPERATOR
(Contract)

Junior Engineer
Vacant

DATA OPERATOR
(Contract)

ASSISTANT ENGINEER (RGVY) - A
Jitendra Arora
Feeder Manager
9413359923

Junior Engineer
Mrs Kiran
JEN
9414095773

DATA OPERATOR
(Contract)

ASSISTANT ENGINEER (RGVY) - B
Every AEN of concerned block shall act as AEN(RGVY) & will be responsible for implementation of RGVY project in their respective block.

Junior Engineer
JEN of concerned block area

DATA OPERATOR
(Contract)

S.E.(RGVY) *[Signature]*

C.E.(RGVY) *[Signature]*

JODHPUR VIDYUT VITARAN NIGAM LIMITED

Annexure - B

RGVY 12TH PLAN

ORGANISATIONAL CHART OF PROJECT MANAGEMENT SYSTEM PMS AT DISTRICT/CIRCLE

SIROHI

For District wise RGVY Projects
Concerned SE (O&M)
shall act as Nodal Officer

EXECUTIVE ENGINEER (RGVY)

Engineer In-charge
PRAVEEN KHATRI (XEN-TA to SE)
94133 59305

A.EN. (Quality Assurance-RGVY)

AMIT SIHRA
Feeder Manager
94140 58074

Junior Engineer
Miss PRIYANKA
JEN
94133 12856

DATA OPERATOR
(Contract)

Junior Engineer
Miss JOSHNA NIRANJAN
JEN
77938 19235

DATA OPERATOR
(Contract)

ASSISTANT ENGINEER (RGVY) - A

NIMENDRA RAJ
Feeder Manager
94133 59378

Junior Engineer
Miss ANKITA SHARMA
JEN
94133 13091

DATA OPERATOR
(Contract)

ASSISTANT ENGINEER (RGVY) - B

Every AEN of concerned block shall act as AEN(RGVY) & will be responsible for implementation of RGVY project in their respective block.

Junior Engineer
JEN of concerned block area

DATA OPERATOR
(Contract)

S.E. (RGVY)

C.E. (RGVY)

JODHPUR VIDYUT VITARAN NIGAM LIMITED

Annexure - B

**RGVY 12TH PLAN
ORGANISATIONAL CHART OF PROJECT MANAGEMENT SYSTEM PMS AT DISTRICT/CIRCLE
JALORE**

For District wise RGVY Projects
Concerned SE (O&M)
shall act as Nodal Officer

EXECUTIVE ENGINEER (RGVY)
Engineer In-charge
H.K.SANKHLECHA (XEN-TA to SE)
94133 59484

A.EN. (Quality Assurance-RGVY)
K.S. MEENA
Feeder Manager
94133 59510

Junior Engineer
Miss SONALI KESRI
JEN
77938 19235

DATA OPERATOR
(Contract)

Junior Engineer
Vacant

DATA OPERATOR
(Contract)

ASSISTANT ENGINEER (RGVY) - A
TARIQ KHAN
Feeder Manager
94140 58065

Junior Engineer
Miss ANAMIKA KUMARI
JEN
94730 27932

DATA OPERATOR
(Contract)

ASSISTANT ENGINEER (RGVY) - B
Every AEN of concerned block shall act as AEN(RGVY) & will be responsible for implementation of RGVY project in their respective block.

Junior Engineer
JEN of concerned block area

DATA OPERATOR
(Contract)

S.E. (RGVY)

C.E. (RGVY)

JODHPUR VIDYUT VITARAN NIGAM LIMITED

Annexure - B

**RGVY 12TH PLAN
ORGANISATIONAL CHART OF PROJECT MANAGEMENT SYSTEM PMS AT DISTRICT/CIRCLE
BIKANER**

For District wise RGVY Projects
Concerned SE (O&M)
shall act as Nodal Officer

EXECUTIVE ENGINEER (RGVY)
Engineer In-charge
D.K.KOCHAR (XEN - TA to SE)
94133 59542

A.EN. (Quality Assurance-RGVY)
RAJENDRA MEENA
Feeder Manager
94133 59829

ASSISTANT ENGINEER (RGVY) - A
VISHNU METHI
Feeder Manager
94133 59570

ASSISTANT ENGINEER (RGVY) - B
Every AEN of concerned block
shall act as AEN(RGVY) & will be responsible for
implementation of RGVY project in their
respective block.

Junior Engineer
Mrs RITU PUROHIT
JEN
94140 20953

Junior Engineer
Miss NAMRATA SHARMA
JEN
94140 20952

Junior Engineer
Mrs PRITI PAUL
JEN
94140 20963

Junior Engineer
JEN of
concerned
block area

DATA OPERATOR
(Contract)

DATA OPERATOR
(Contract)

DATA OPERATOR
(Contract)

DATA OPERATOR
(Contract)

S.E. (RGVY)

C.E. (RGVY)

JODHPUR VIDYUT VITARAN NIGAM LIMITED

Annexure - B

**RGGVY 12TH PLAN
ORGANISATIONAL CHART OF PROJECT MANAGEMENT SYSTEM PMS AT DISTRICT/CIRCLE
CHURU**

For District wise RGGVY Projects
Concerned SE (O&M)
shall act as Nodal Officer

EXECUTIVE ENGINEER (RGGVY)
Engineer In-charge
SAYAD IMAMUDDIN (XEN - TA to SE)
94133 59749

A.EN. (Quality Assurance-RGGVY)
A.K.PUNIA
Feeder Manager
94140 58019

ASSISTANT ENGINEER (RGGVY) - A
V.L.SAINI
Feeder Manager
94140 95653

ASSISTANT ENGINEER (RGGVY) - B
Every AEN of concerned block shall act as AEN(RGGVY) & will be responsible for implementation of RGGVY project in their respective block.

Junior Engineer
MISS SAROJ JEN
94140 58031

Junior Engineer
VACANT JEN

Junior Engineer
MISS NEHA JEN
94140 95664

Junior Engineer
JEN of concerned block area

DATA OPERATOR (Contract)

DATA OPERATOR (Contract)

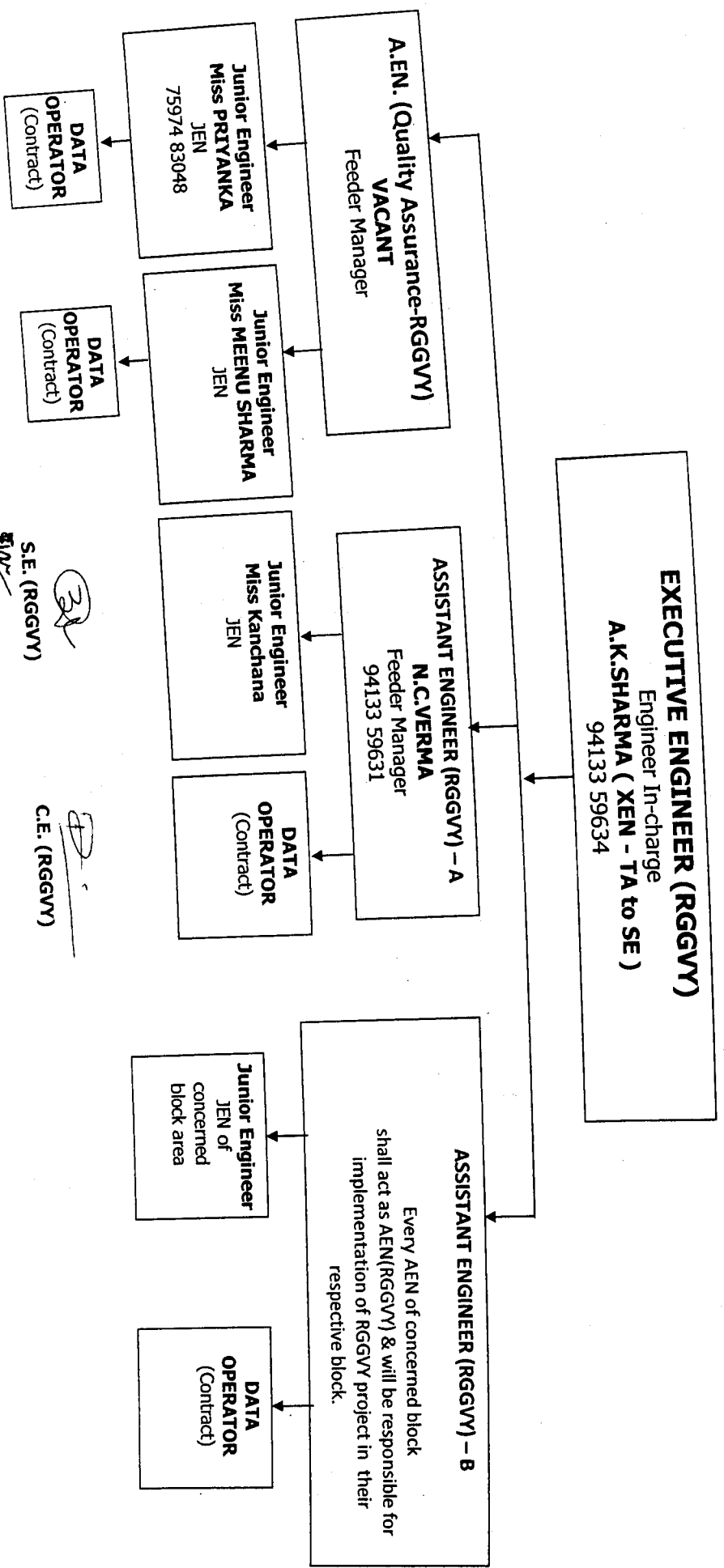
DATA OPERATOR (Contract)

S.E. (RGGVY)

C.E. (RGGVY)

JODHPUR VIDYUT VITARAN NIGAM LIMITED
RGVY 12TH PLAN
ORGANISATIONAL CHART OF PROJECT MANAGEMENT SYSTEM PMS AT DISTRICT/CIRCLE
HANUMANGARH

For District wise RGVY Projects
Concerned SE (O&M)
shall act as Nodal Officer



S.E. (RGVY)

C.E. (RGVY)

JODHPUR VIDYUT VITARAN NIGAM LIMITED
RGVY 12TH PLAN

Annexure - B

ORGANISATIONAL CHART OF PROJECT MANAGEMENT SYSTEM PMS AT DISTRICT/CIRCLE
SRI GANGANAGAR

For District wise RGVY Projects
 Concerned SE (O&M)
 shall act as Nodal Officer

EXECUTIVE ENGINEER (RGVY)
 Engineer In-charge
V.I.PARIHAR (XEN-TA to SE)
 94140 20998

A.EN. (Quality Assurance-RGVY)
MADAN GOPAL
 Feeder Manager
 94133 59736

Junior Engineer
Miss KHUSHI
 JEN
 94140 20598

DATA OPERATOR
 (Contract)

Junior Engineer
Miss SHILPA
 JEN
 94140 79714

DATA OPERATOR
 (Contract)

ASSISTANT ENGINEER (RGVY) - A
VACANT
 Feeder Manager

Junior Engineer
VACANT
 JEN

DATA OPERATOR
 (Contract)

ASSISTANT ENGINEER (RGVY) - B
 Every AEN of concerned block shall act as AEN(RGVY) & will be responsible for implementation of RGVY project in their respective block.

Junior Engineer
 JEN of concerned block area

DATA OPERATOR
 (Contract)

S.E. (RGVY)

C.E. (RGVY)

32

2