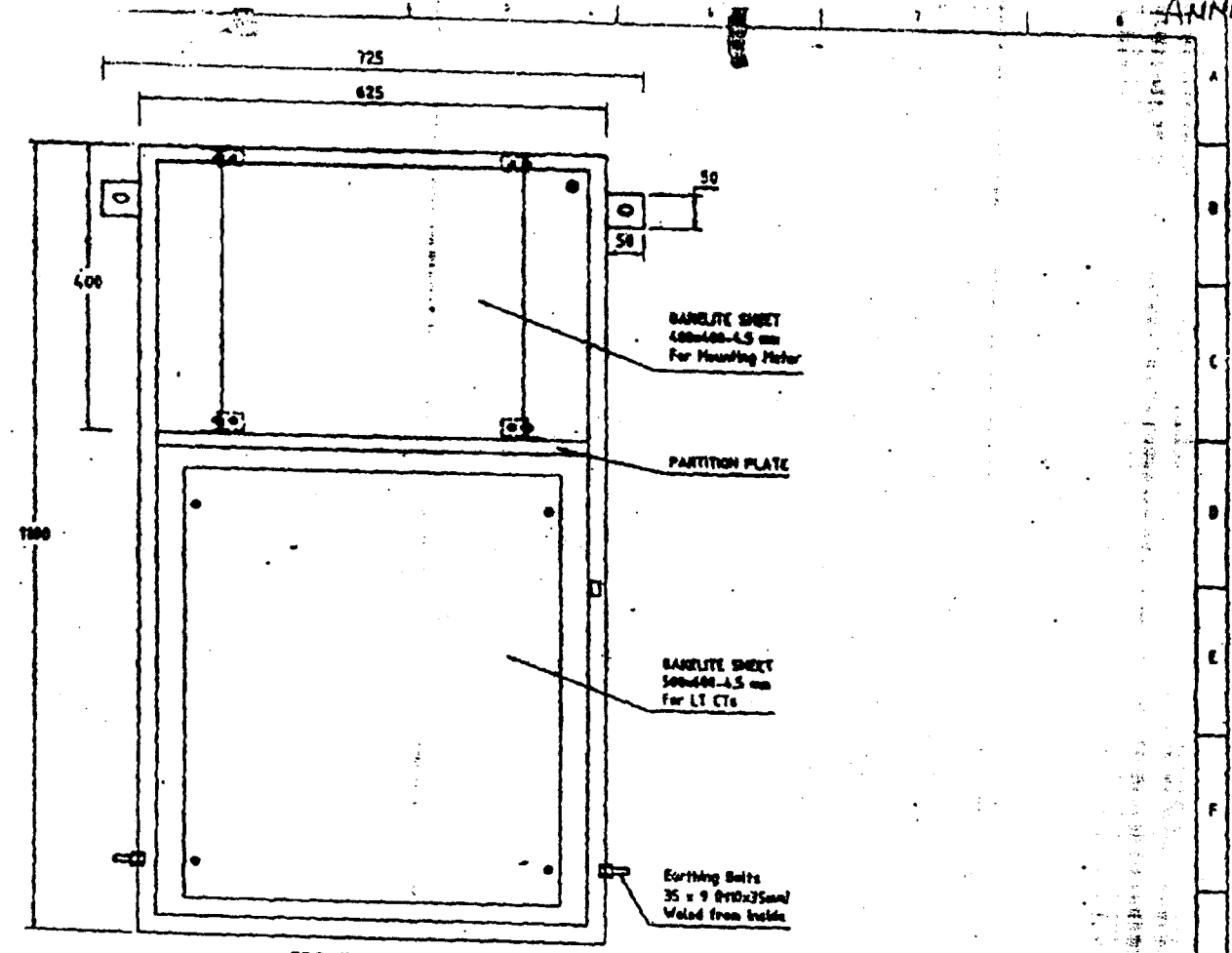


FRONT ELEVATION
Front Door Closed
A, B, C MS Angle 25x25-3T to be welded inside the door

| | | | |
|--|--------------------------------|----------|------------------|
| Prepared | SE. MH. J. V. V. H. LTD, JAPUR | Scale | |
| Checked | JPD/SENMD/SPO-IV/TN | Project | |
| Approved | MRP METER BOX | Sheet No | 01 |
| Date | 24. 2. 2019 | Drawn by | VIC.SCT/MMS/2019 |
| Drawing of PANEL'S FRONT ELEVATION DOOR CLOSED | | | 05 |

TN-2512

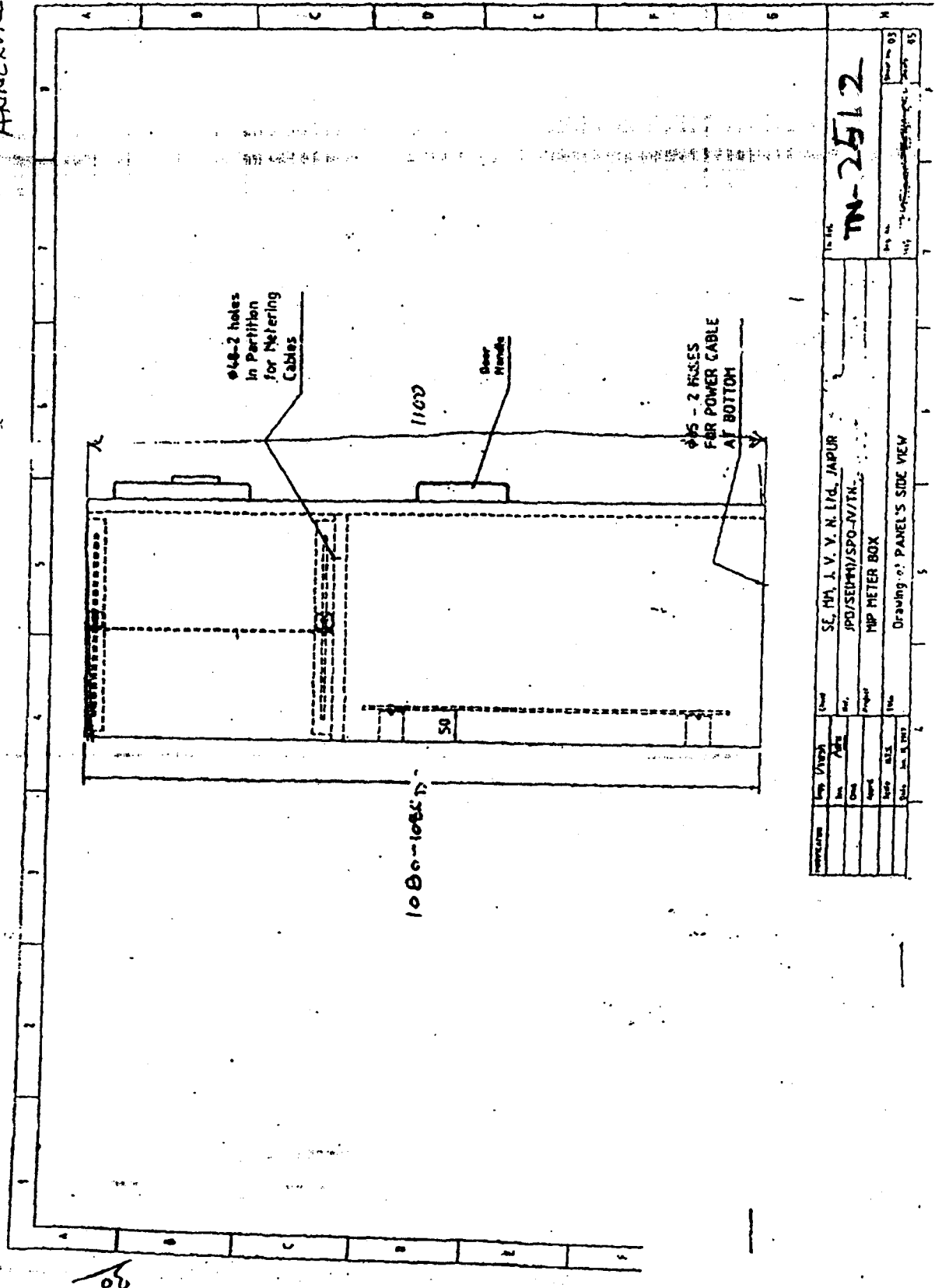
52



FRONT ELEVATION
Front Door Removed

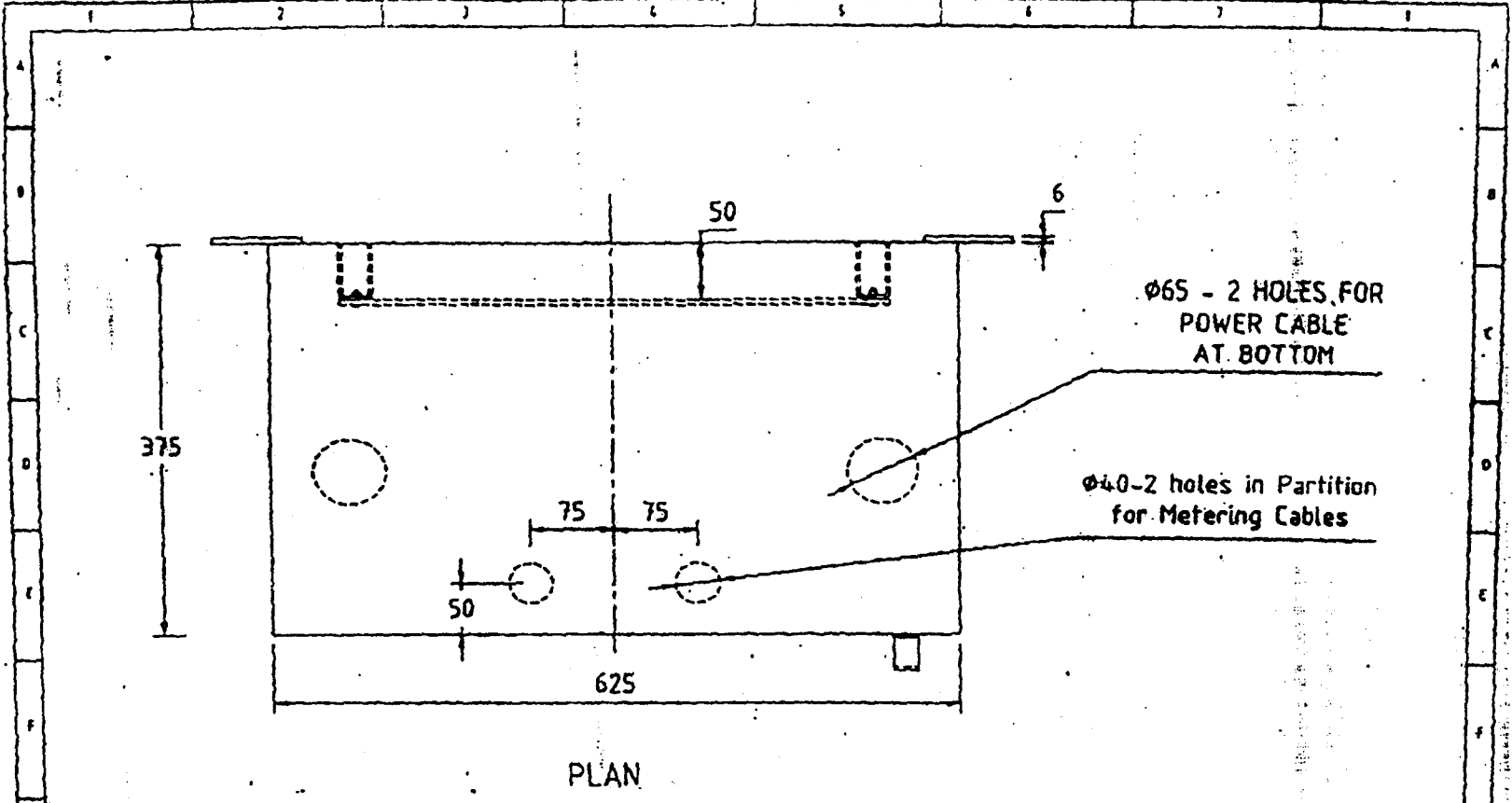
| | | |
|--------|-----------------------------------|--------------|
| Client | SE, MFL, I. V. V. N. Ltd., JAIPUR | TN-2512 |
| Div. | JPO/SEMHI/SPO-IV/TN- | |
| Spec. | MIP METER BOX | Sheet No. 02 |
| Scale | 1:1 | |
| Date | Jan. 11, 2007 | 05 |

35
6



| | | | |
|-------------------------------|----------------------------|-------------|---------------|
| Project No. | 115 | Sheet No. | 05 |
| Scale | 1:1 | Drawn by | 05 |
| Checked by | | Checked by | |
| Approved by | | Approved by | |
| Date | 10.11.2017 | Date | 10.11.2017 |
| Drawing of: PANEL'S SIDE VIEW | | | |
| Client | SE. M. I. V. N. LID. JAPUR | Project | MIP METER BOX |
| Job No. | JPO/SEI/M/SPO-N/TN. | Sheet No. | 05 |
| Project | | Scale | 1:1 |
| TN-2512 | | | |

31-



Ø65 - 2 HOLES FOR
POWER CABLE
AT BOTTOM

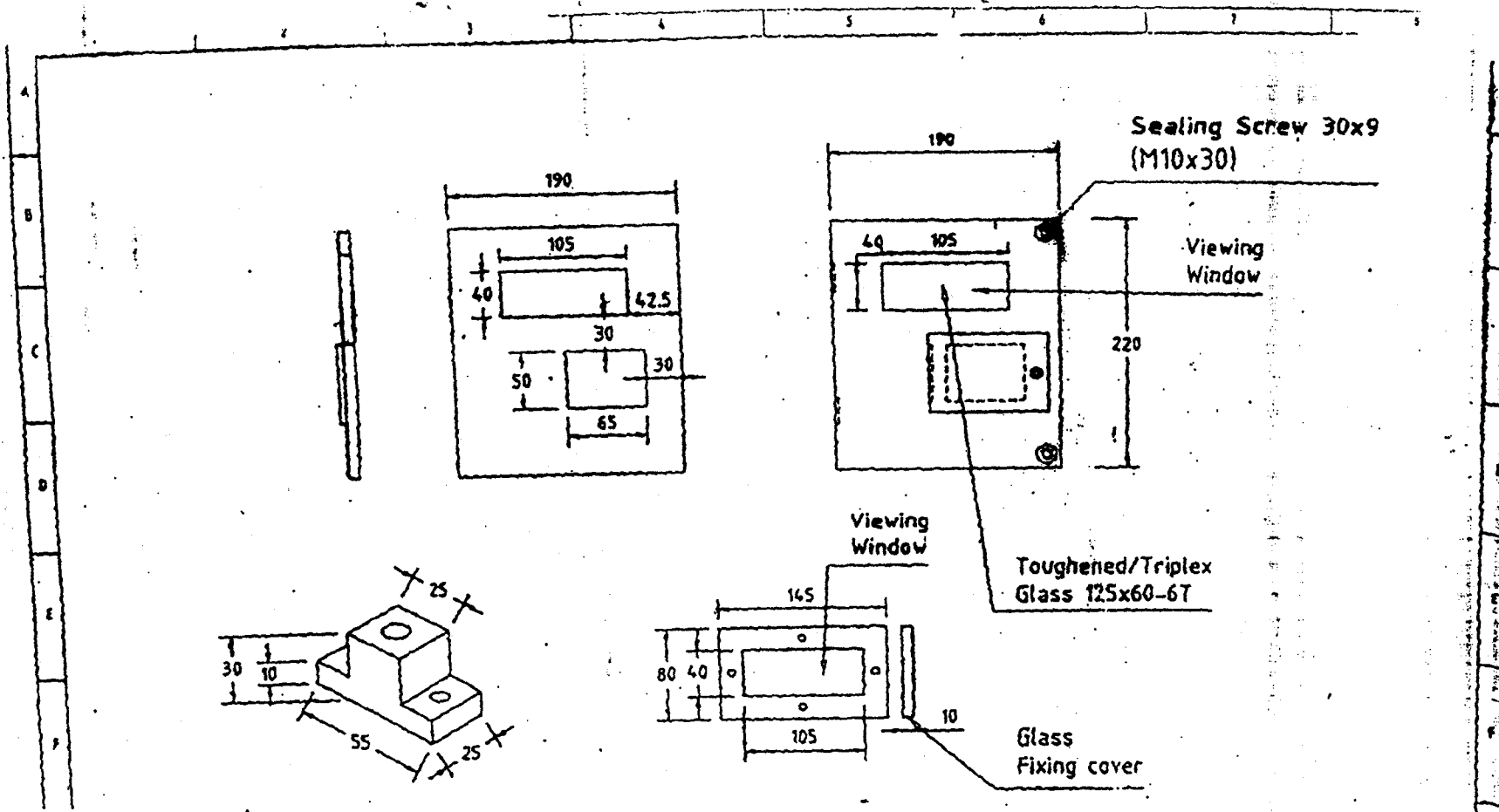
Ø40-2 holes in Partition
for Metering Cables

PLAN

| | | | |
|--------------|-------------------------------|-------------------------|---------|
| Organization | SE, MM, I. V. N. LTD., JAIPUR | Project No. | TN-2512 |
| Drawn | JPO/SEI(M)/SPO-IV/TN | Sheet No. | 04 |
| Checked | MP METER BOX | Date | 05 |
| Scale | 1:1 | Drawing of PANEL'S PLAN | |
| Date | Jan 11, 2007 | | |

ANNEXURE-V

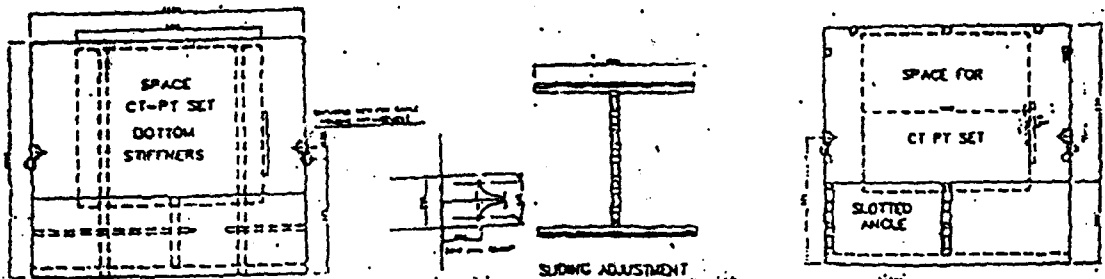
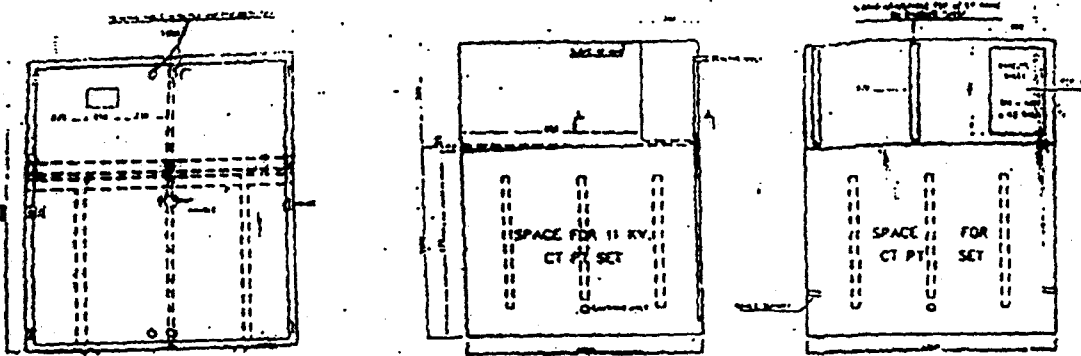
1/2



| | | | | |
|------------|-------------|---------------|---|--------------|
| INDICATION | Emp. Design | Class | SE. MM. I. V. V. H. Ltd., JAIPUR | Tn. No. |
| | Des. | Aut. | JPD/SE(MM)/SPO-IV/TN- | TN-2512 |
| | Drawn | Project | MP METER BOX | |
| | Scale | Drawn | Drawing of PANEL'S WINDOW DOOR, BUS BAR CLEAT | Sheet No. 41 |
| | Date | Jan. 11, 1981 | | |

2/3

32



BILL OF MATERIAL

| S.NO. | PARTICULARS | SPECIFICATION | QTY. |
|-------|-------------|---------------|-------|
| 1 | U.S. SHEET | 3 mm | 1 pc. |
| 2 | U.S. SHEET | 1.6 mm | 1 pc. |
| 3 | U.S. SHEET | 1.6 mm | 1 pc. |
| 4 | U.S. SHEET | 1.6 mm | 1 pc. |
| 5 | U.S. SHEET | 1.6 mm | 1 pc. |
| 6 | U.S. SHEET | 1.6 mm | 1 pc. |
| 7 | U.S. SHEET | 1.6 mm | 1 pc. |
| 8 | U.S. SHEET | 1.6 mm | 1 pc. |
| 9 | U.S. SHEET | 1.6 mm | 1 pc. |
| 10 | U.S. SHEET | 1.6 mm | 1 pc. |
| 11 | U.S. SHEET | 1.6 mm | 1 pc. |
| 12 | U.S. SHEET | 1.6 mm | 1 pc. |
| 13 | U.S. SHEET | 1.6 mm | 1 pc. |
| 14 | U.S. SHEET | 1.6 mm | 1 pc. |
| 15 | U.S. SHEET | 1.6 mm | 1 pc. |
| 16 | U.S. SHEET | 1.6 mm | 1 pc. |
| 17 | U.S. SHEET | 1.6 mm | 1 pc. |
| 18 | U.S. SHEET | 1.6 mm | 1 pc. |
| 19 | U.S. SHEET | 1.6 mm | 1 pc. |
| 20 | U.S. SHEET | 1.6 mm | 1 pc. |
| 21 | U.S. SHEET | 1.6 mm | 1 pc. |
| 22 | U.S. SHEET | 1.6 mm | 1 pc. |
| 23 | U.S. SHEET | 1.6 mm | 1 pc. |
| 24 | U.S. SHEET | 1.6 mm | 1 pc. |
| 25 | U.S. SHEET | 1.6 mm | 1 pc. |
| 26 | U.S. SHEET | 1.6 mm | 1 pc. |
| 27 | U.S. SHEET | 1.6 mm | 1 pc. |
| 28 | U.S. SHEET | 1.6 mm | 1 pc. |
| 29 | U.S. SHEET | 1.6 mm | 1 pc. |
| 30 | U.S. SHEET | 1.6 mm | 1 pc. |
| 31 | U.S. SHEET | 1.6 mm | 1 pc. |
| 32 | U.S. SHEET | 1.6 mm | 1 pc. |
| 33 | U.S. SHEET | 1.6 mm | 1 pc. |
| 34 | U.S. SHEET | 1.6 mm | 1 pc. |
| 35 | U.S. SHEET | 1.6 mm | 1 pc. |
| 36 | U.S. SHEET | 1.6 mm | 1 pc. |
| 37 | U.S. SHEET | 1.6 mm | 1 pc. |
| 38 | U.S. SHEET | 1.6 mm | 1 pc. |
| 39 | U.S. SHEET | 1.6 mm | 1 pc. |
| 40 | U.S. SHEET | 1.6 mm | 1 pc. |
| 41 | U.S. SHEET | 1.6 mm | 1 pc. |
| 42 | U.S. SHEET | 1.6 mm | 1 pc. |
| 43 | U.S. SHEET | 1.6 mm | 1 pc. |
| 44 | U.S. SHEET | 1.6 mm | 1 pc. |
| 45 | U.S. SHEET | 1.6 mm | 1 pc. |
| 46 | U.S. SHEET | 1.6 mm | 1 pc. |
| 47 | U.S. SHEET | 1.6 mm | 1 pc. |
| 48 | U.S. SHEET | 1.6 mm | 1 pc. |
| 49 | U.S. SHEET | 1.6 mm | 1 pc. |
| 50 | U.S. SHEET | 1.6 mm | 1 pc. |

DIMENSIONAL TOLERANCE ±2%

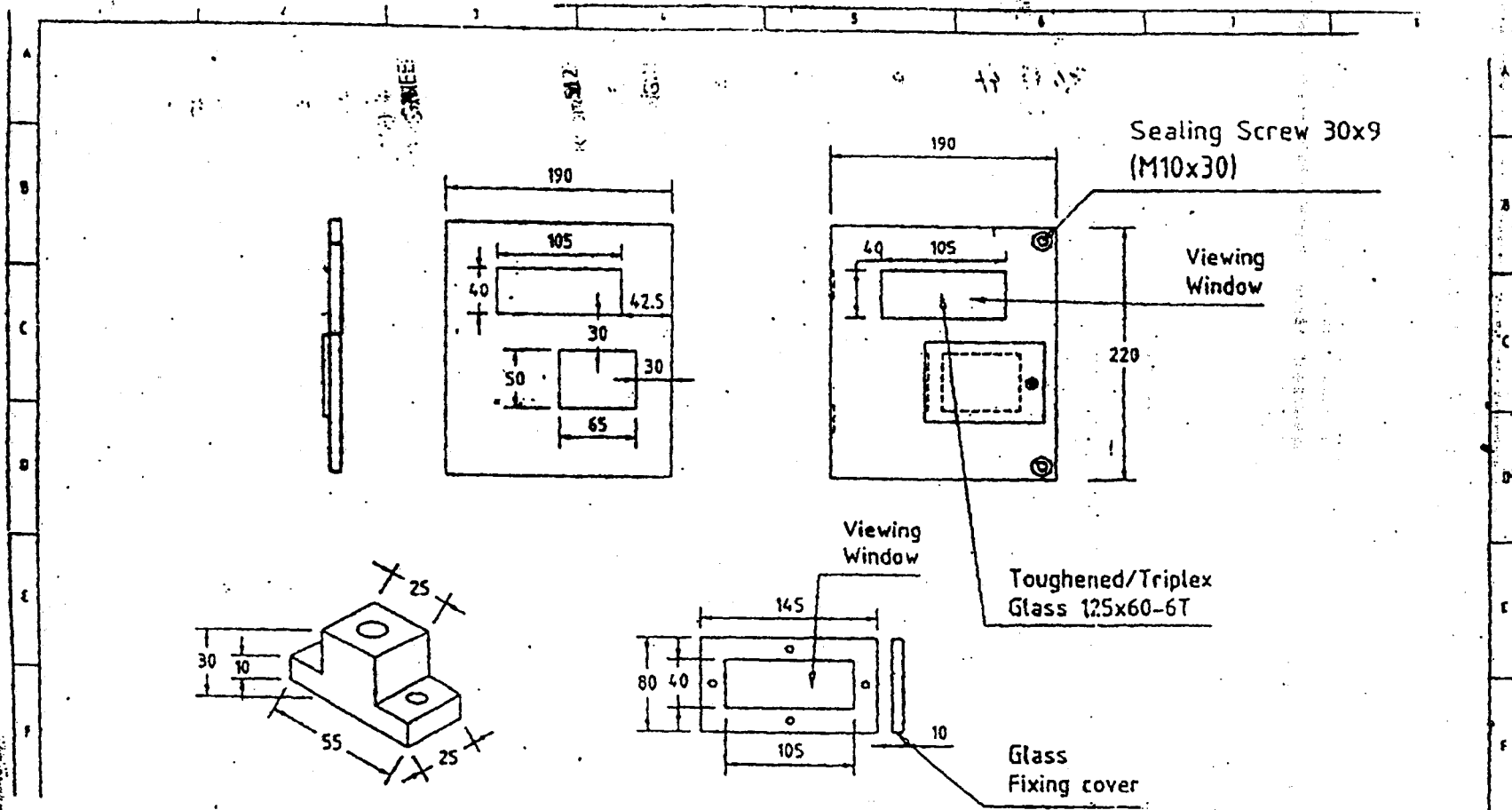
1. THICKNESS OF U.S. SHEET OF BOTTOM 3 mm.
2. THICKNESS OF U.S. SHEET OF CUBICAL 1.6 mm (16 SWG) FOR SIDES & TOP.
3. THICKNESS OF U.S. SHEET OF CUBICAL DOOR 1.6 mm (16 SWG) WITH STIFFNERS.
4. ALL DIMENSIONS ARE IN MM.
5. APPROXIMATE WEIGHT OF BOX 210 Kg. ± 3 Percent.

DRAWING OF HT METER BOX

TN- 2512

ANNEXURE-VI

30



| DESCRIPTION | Qty | Unit | REVISION |
|-------------|-----|------|------------------------------------|
| | | | SE. MM. I. V. V. R. LTD., SAIDAPUR |
| | | | JPO/SE(MM)/SPO-IV/TN- |
| | | | METER BOX |
| | | | |
| | | | |

TN-2512

41