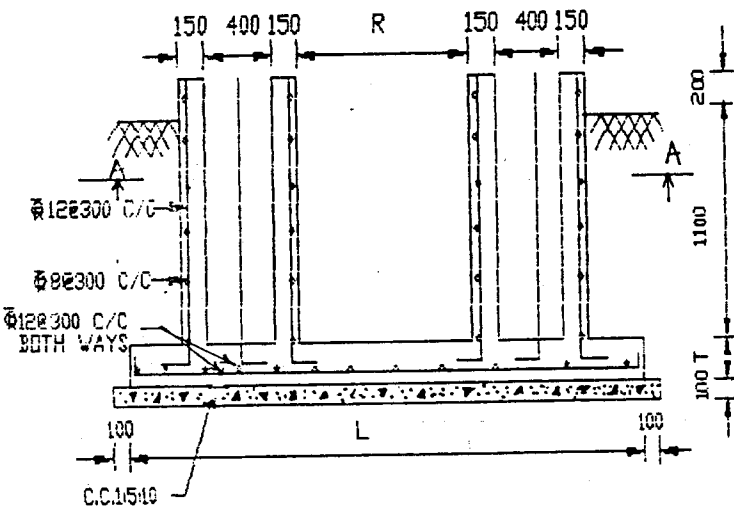
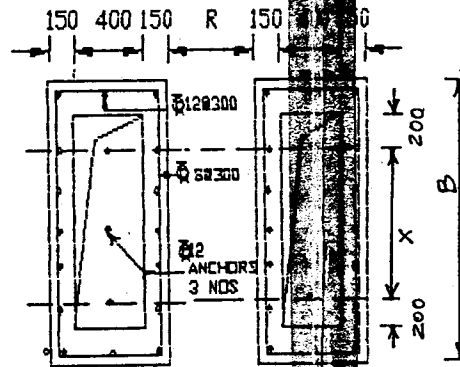


PLAN



SECTION AT C-C



SECTION AT A-A

INDEX

TYPE OF FOOTING	DIA OF BAR	NO. OF BAR	SHAPE OF BAR	WEIGHT (IN Kg.)
XYZ & YZ	12 $\Phi$	5	2500   100   1300   100	11.99
	12 $\Phi$	9		11.98
	12 $\Phi$	30	1400   1300   200	42.63
	8 $\Phi$	4		6.0
XY &	12 $\Phi$	5	2100   100   1300   100	10.21
	12 $\Phi$	9		10.66
	12 $\Phi$	30	1400   1300   200	42.62
	8 $\Phi$	4		6.0
PIQIR1 & QIR1	12 $\Phi$	6	2900   100   1400   100	16.52
	12 $\Phi$	11		15.63
	12 $\Phi$	34	1450   1400   200	49.82
	8 $\Phi$	4		6.32
PIQ1 & Q1	12 $\Phi$	6	2500   100   1400   100	14.39
	12 $\Phi$	9		12.74
	12 $\Phi$	30	1450   1400   200	43.96
	8 $\Phi$	4		6.32

NOTES

1. ALL DIMENSIONS ARE IN M.M.
2. ONLY WRITTEN DIMENSIONS ARE TO BE FOLLOWED.
3. COVER TO REINFORCEMENT SHALL BE 50 M.M.
4. CONCRETE MIX SHALL BE 290 KG. CEMENT : 0.9 CUM. STONE GRIT 20 MM. : 0.45 CUM. RIVER SAND PER CUM. OF CONCRETE.
5. NUMBER OF BARS SHALL NOT BE COUNTED FROM THE DRAWING BUT SHALL BE PROVIDED AS PER BAR BENDING SCHEDULE.

DIM	TYPE OF STRUCTURE							
	XYZ	YZ	XY	Y	PIQIR1	QIR1	PIQ1	Q1
X	644	644	628	628	786	786	766	766
Y	1244	1244	960	960	1756	1756	1460	1460
R	544	544	260	260	1056	1056	760	760
L	2600	2600	2200	2200	3000	3000	2600	2600
B	1400	1400	1400	1400	1500	1500	1500	1500
T	200	200	200	200	250	250	250	250

TYPE OF FOOTING	CEMENT (KG)	GRIT (CUM)	SAND (CUM)	12 $\Phi$ BAR	8 $\Phi$ BAR
XYZ & YZ	1090	3.35	1.675	66.6	6.0
XY &	1065	3.19	1.596	63.49	6.0
PIQIR1 & QIR1	1276	3.96	1.98	91.96	6.32
PIQ1 & Q1	1216	3.76	1.88	71.13	6.32

Chief Engineer  
R.R.V.P.N.L., JAIPUR

OFFICE OF THE SUPTD. ENGINEER (CIVIL)  
RAJASTHAN STATE ELECTRICITY BOARD

FOUNDATION DESIGN FOR  
XYZ, YZ, XY, Y, PIQIR1, QIR1,  
PIQ1 & Q1 TYPE STRUCTURES

DRAWN BY	CHECKED BY	DATE	SCALE	DRG. NO.
		25.8.85	M.T.S.	SENDA 96

SUBMITTED BY	APPROVED BY