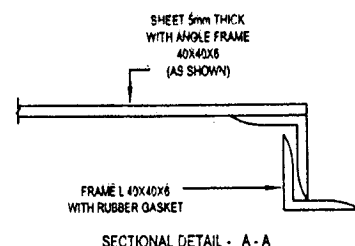
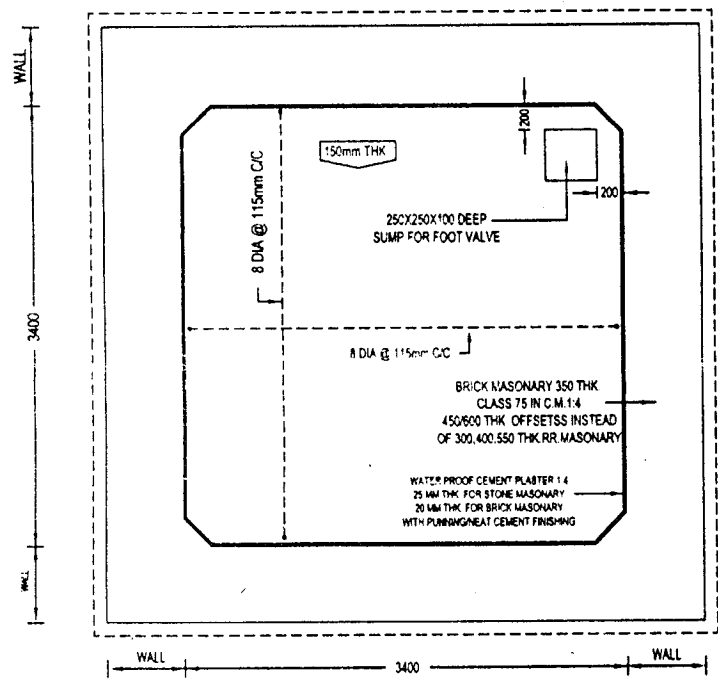
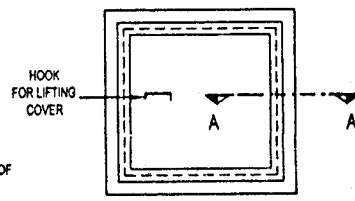
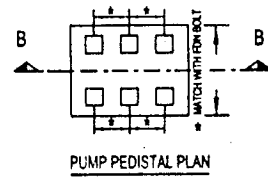
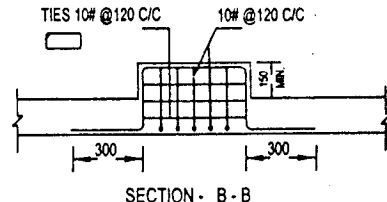
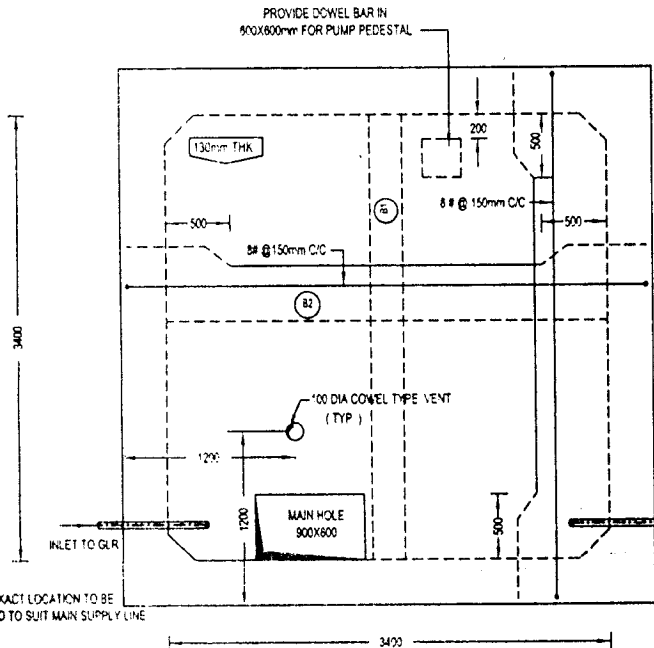
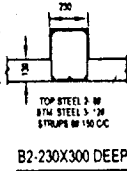
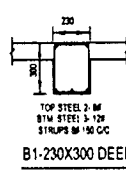
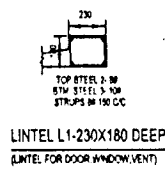
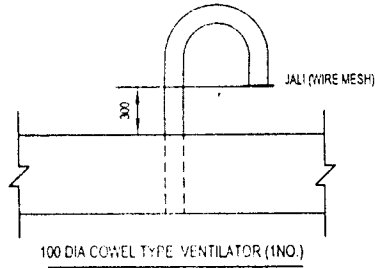
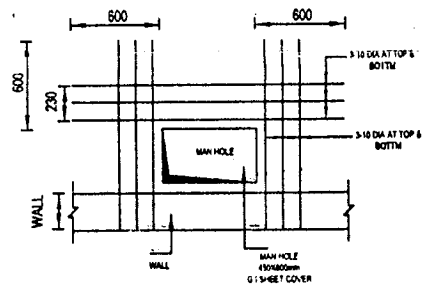


WITH PUMP ROOM



DETAIL-P (RAISED BY ARRANGEMENT SHOWN)



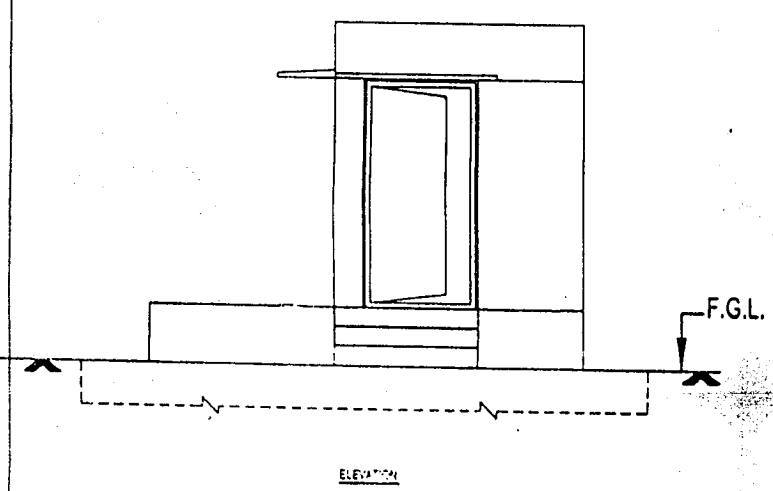
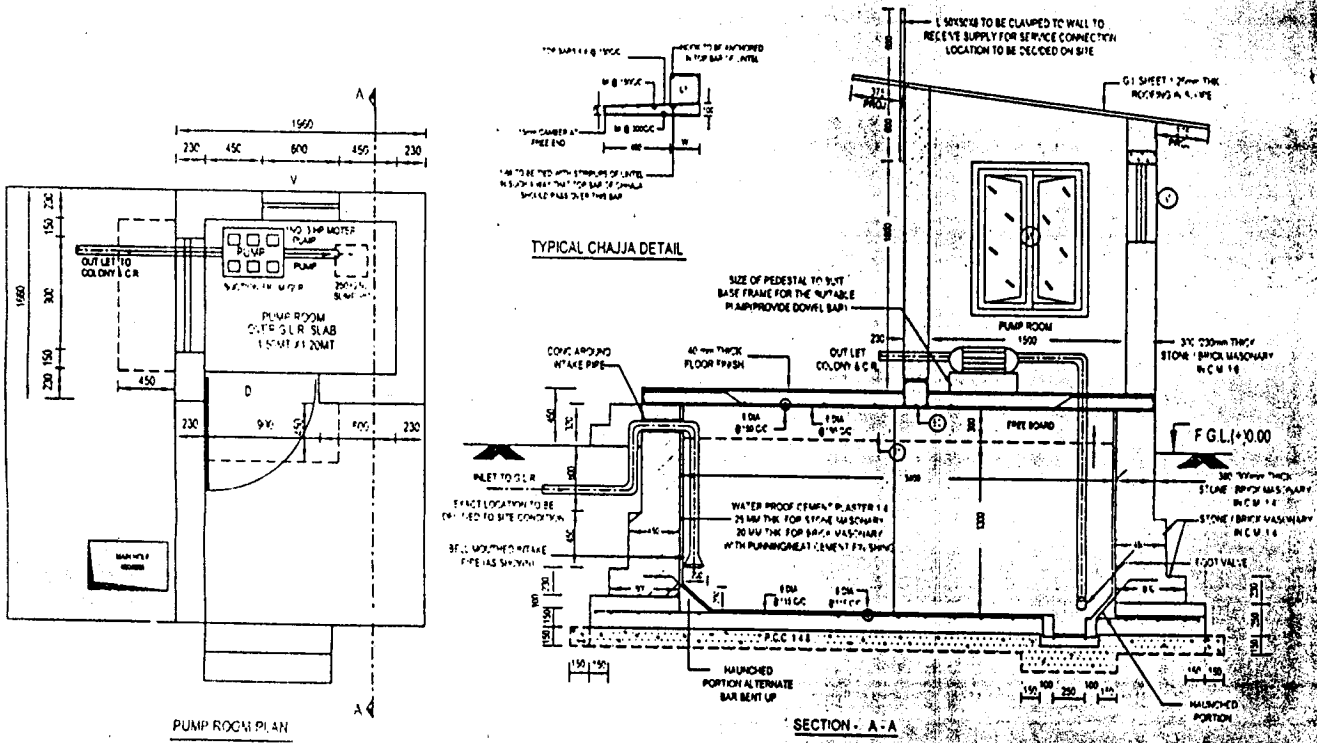
Chief Engineer (Civil)
R.R.V.P.N.L., JAIPUR

16.8.04
N.B.H. (Civil)

DETAIL OF G.L.R.(GROUND LEVEL RESERVOIR 15,000 LITRES CAPACITY)

SHEET -1/2

WITH PUMP ROOM



Chief Engineer (Civil)

OFFICE OF THE CHIEF ENGINEER (CIVIL)		
RAJ. RAJYA VIDYUT PRASARAN NIGAM LTD.		
DETAIL OF G.L.R. (GROUND LEVEL RESERVOIR)		
DRAWN BY: <i>B.M.V.</i> (J.P. PAREEK) D.MAN-II	CHECKED BY: <i>[Signature]</i> A.E.V.C-DESIGN	DRG NO. <i>2/2KA</i> SCALE: <i>NRS</i> DATE: <i>16.3.04</i>
SUBMITTED BY: <i>[Signature]</i> XEN(C-DESIGN)	APPROVED BY: <i>[Signature]</i> CHIEF ENGINEER (CIVIL)	