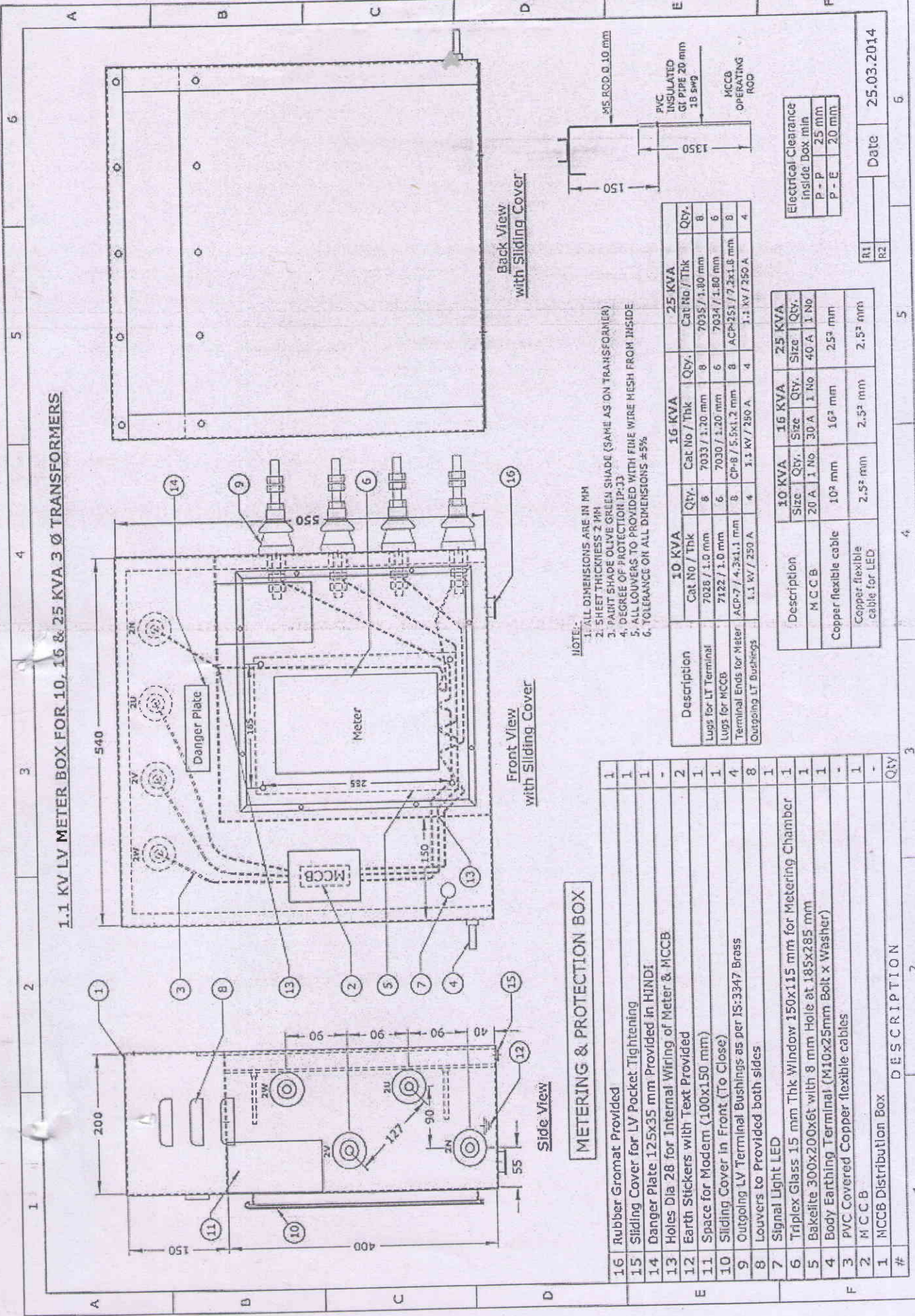


Amneshwar - C
(Page 1 of 2)

1.1 KV LV METER BOX FOR 10, 16 & 25 KVA 3 Ø TRANSFORMERS



METERING & PROTECTION BOX

#	DESCRIPTION	Qty
16	Rubber Gromat Provided	1
15	Sliding Cover for LV Pocket Tightening	1
14	Danger Plate 125x35 mm Provided in HINDI	1
13	Holes Dia 28 for Internal Wiring of Meter & MCCB	-
12	Earth Stickers with Text Provided	2
11	Space for Modern (100x150 mm)	1
10	Sliding Cover in Front (To Close)	1
9	Outgoing LV Terminal Bushings as per IS:3347 Brass	4
8	Louvers to Provided both sides	8
7	Signal Light LED	1
6	Triplex Glass 15 mm Thk Window 150x115 mm for Metering Chamber	1
5	Bakelite 300x200x6t with 8 mm Hole at 185x285 mm	1
4	Body Earthing Terminal (M10x25mm Bolt x Washer)	1
3	PVC Covered Copper flexible cables	-
2	MCCB	1
1	MCCB Distribution Box	1

NOTE:-
 1. ALL DIMENSIONS ARE IN MM
 2. SHEET THICKNESS 2 MM
 3. PAINT SHADE OLIVE GREEN SHADE (SAME AS ON TRANSFORMER)
 4. DEGREE OF PROTECTION IP:33
 5. ALL LOUVERS TO PROVIDED WITH FINE WIRE MESH FROM INSIDE
 6. TOLERANCE ON ALL DIMENSIONS ±5%

Description	10 KVA		16 KVA		25 KVA	
	Cat No / Thk	Qty.	Cat No / Thk	Qty.	Cat No / Thk	Qty.
Lugs for LT Terminal	7028 / 1.0 mm	8	7033 / 1.20 mm	8	7035 / 1.80 mm	8
Lugs for MCCB	7122 / 1.0 mm	6	7030 / 1.20 mm	6	7034 / 1.80 mm	6
Terminal Ends for Meter	ACP-7 / 4.3x1.1 mm	8	CP-8 / 5.5x1.2 mm	8	ACP-251 / 7.2x1.8 mm	8
Outgoing LT Bushings	1.1 KV / 250 A	4	1.1 KV / 250 A	4	1.1 KV / 250 A	4

Description	10 KVA		16 KVA		25 KVA	
	Size	Qty.	Size	Qty.	Size	Qty.
MCCB	20 A	1 No.	30 A	1 No.	40 A	1 No.
Copper flexible cable	10 ² mm	10 ² mm	16 ² mm	16 ² mm	25 ² mm	25 ² mm
Copper flexible cable for LED	2.5 ² mm	2.5 ² mm	2.5 ² mm	2.5 ² mm	2.5 ² mm	2.5 ² mm

Electrical Clearance inside Box min	
P - P	25 mm
P - E	20 mm

#	Date
R1	25.03.2014
R2	

AOM-2011-01 (E)
(Date 2/2/22)

1.1 KV LV METER BOX FOR 10, 16 & 25 KVA 3 Ø TRANSFORMERS

